



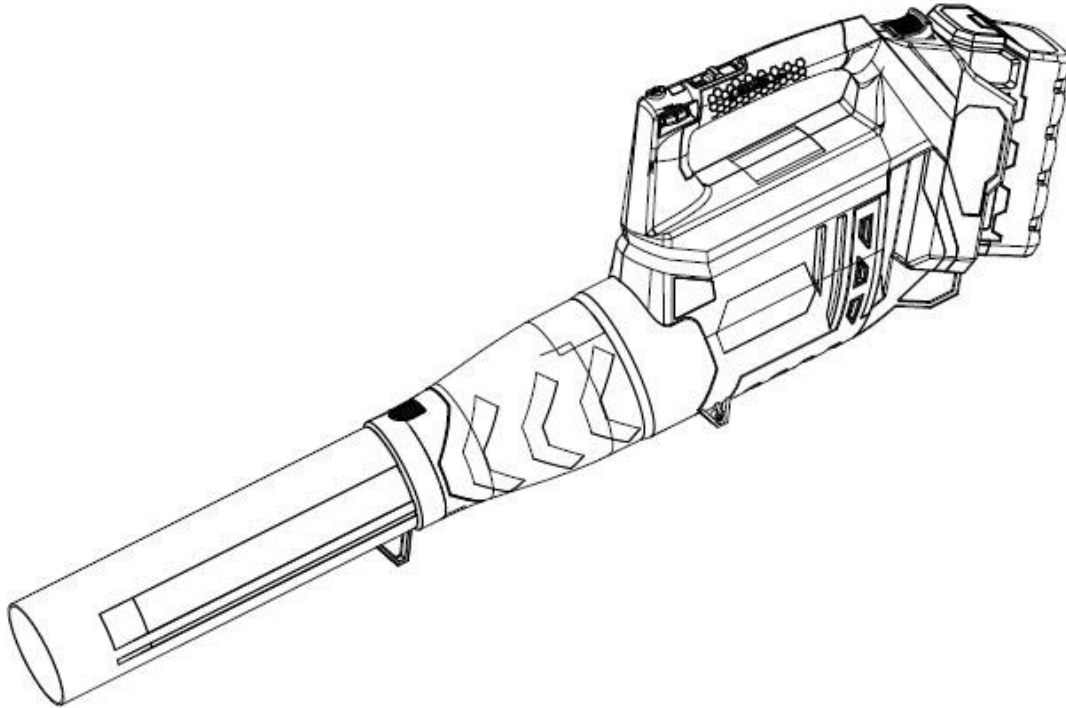
OPERATOR'S MANUAL

CORDLESS 58 VOLT LITHIUM BLOWER

This product is covered by U.S. patents and other international patents

Copyright. All Rights Reserved.

LB20058



CA Compliant charger included, Model No. CHL80058

Your cordless blower has been engineered and manufactured to our high standard for dependability, ease of operation, and operator safety. Properly cared for, it will give you years of rugged, trouble-free performance.



WARNING: To reduce the risk of injury, the user must read and understand the operator's manual before using this product.

BATTERY MUST BE CHARGED BEFORE FIRST USE.

Thank you for your purchase.

DO NOT RETURN THIS PRODUCT TO THE STORE. OPERATING, ASSEMBLY, PARTS, SERVICE QUESTIONS? CALL 1-800-313-5111 BETWEEN 8:00 AM—5:00 PM EST FOR ASSISTANCE, OR SEND EMAILS TO EARTHWISE@REELIN.COM.

SAVE THIS MANUAL FOR FUTURE REFERENCE

⚠ IMPORTANT SAFETY WARNINGS ⚠

TO REDUCE RISK OF INJURY:

Before any use, be sure everyone using this tool reads and understands all safety instructions and other information contained in this manual.

⚠ **CAUTION:** Wear appropriate personal hearing protection during use. Under some conditions and duration of use, noise from this product may contribute to hearing loss.

Save these instructions and review frequently prior to use and in instructing others.

⚠ **WARNING:** When using electric gardening appliances, basic safety precautions should always be followed to reduce risk of fire, electric shock, and personal injury, including the following:

READ ALL INSTRUCTIONS

GENERAL SAFETY

DRESS PROPERLY – Don't wear loose clothing or jewelry. Wear protective hair covering to contain long hair. They can be caught in moving parts. Use of rubber gloves and substantial footwear is recommended when working outdoors. Do not operate while bare foot or wearing open shoes.

USE SAFETY GLASSES –Wear safety glasses with side shields or goggles that are marked to comply with ANSI Z87.1 standard when operating this product. Use face or dust mask if environment is dusty.

USE RIGHT APPLIANCE – Do not use appliance for any job except that for which it is intended.

REMOVE BATTERY FROM BLOWER—when not in use or when servicing or cleaning. Do not leave unattended.

CHECK DAMAGED PARTS – Before further use of the Blower, any part that is damaged should be carefully checked to determine that it will operate properly and perform its intended function. Check for alignment of moving parts, binding of moving parts, breakage of parts, mounting and any other condition that may affect its operation. A part that is damaged should be properly repaired or replaced.

LIGHTING - Only operate Cordless Blower in daylight or good artificial light.

DON'T OVERREACH – Keep proper footing and balance at all times.

⚠ **WARNING:** Do Not use the Cordless Blower with any type of accessory or attachment. Such usage might be hazardous.

AVOID DANGEROUS ENVIRONMENTS – Don't use Cordless Blower in rain, damp or wet locations. Do not operate Cordless Blower in gaseous or explosive atmospheres. Motors in these tools normally spark, and the sparks might ignite fumes.

AVOID UNINTENTIONAL STARTING – Don't carry the Cordless Blower with finger on switch.

DO NOT ATTEMPT to move rocks or sharp materials while operating Blower unit. Do not use the Cordless Blower for any purpose other than that for which it was designed.

PROTECT YOUR HEARING. Wear hearing protection during extended periods of operation. Following this rule will reduce the risk of serious personal injury.

DO NOT PUT ANY OBJECT INTO OPENINGS. Do not use with any opening blocked; keep free of dust, lint, hair, and anything that may reduce air flow.

⚠ **WARNING:** Use only accessories that are recommended by the manufacturer for your model described in this manual. Accessories that may be suitable for one blower may create a risk of injury when used on another blower. Use only as described in this manual.

⚠ **WARNING:** Turn off all controls before removing battery.

⚠ **WARNING:** Use extra care when cleaning on stairs or steps.

⚠ **CAUTION:** Keep children and small pets a safe distance away while operating the Cordless Blower. Flying Debris can cause personal injury.

DON'T FORCE CORDLESS BLOWER – It will do the job better and with less likelihood of a risk of injury at the rate for which it was designed.

STAY ALERT – Watch what you are doing. Use common sense. Do not operate Cordless Blower when you are tired or under the influence of medications, drugs or alcohol.

MAINTAIN CORDLESS BLOWER WITH CARE – Keep blower tube and handles clean for best performance and to reduce the risk of injury. Keep handles dry and free from oil and grease.

⚠ **WARNING:** California Proposition 65:
This product contains chemicals known to the States of California to cause cancer, birth defects or other reproductive harm.

⚠ **WARNING:** Some dust created by this product contains chemicals known to the State of California to cause cancer, birth defects or other reproductive harm. Some examples of these chemicals are:
-compounds in fertilizers
-compounds in insecticides, herbicides and pesticides
-arsenic and chromium from chemically treated lumber

To reduce your exposure to these chemicals, wear approved safety equipment such as dust masks that are specially designed to filter out microscopic particles.

⚠ **WARNING:** Cancer and Reproductive Harm -
www.P65Warnings.ca.gov.

⚠ **CAUTION:** Disconnect battery pack from blower before making any adjustments, changing accessories, or storing the blower. Such preventive safety measures reduce the risk of starting the blower accidentally.

⚠ **CAUTION:** When battery pack is not in use, keep it away from other metal objects like: paper clips, coins, keys, nails, screws, or other small metal objects that can make a connection from one terminal to another. Shorting the battery terminals together may cause sparks, burns, or a fire.

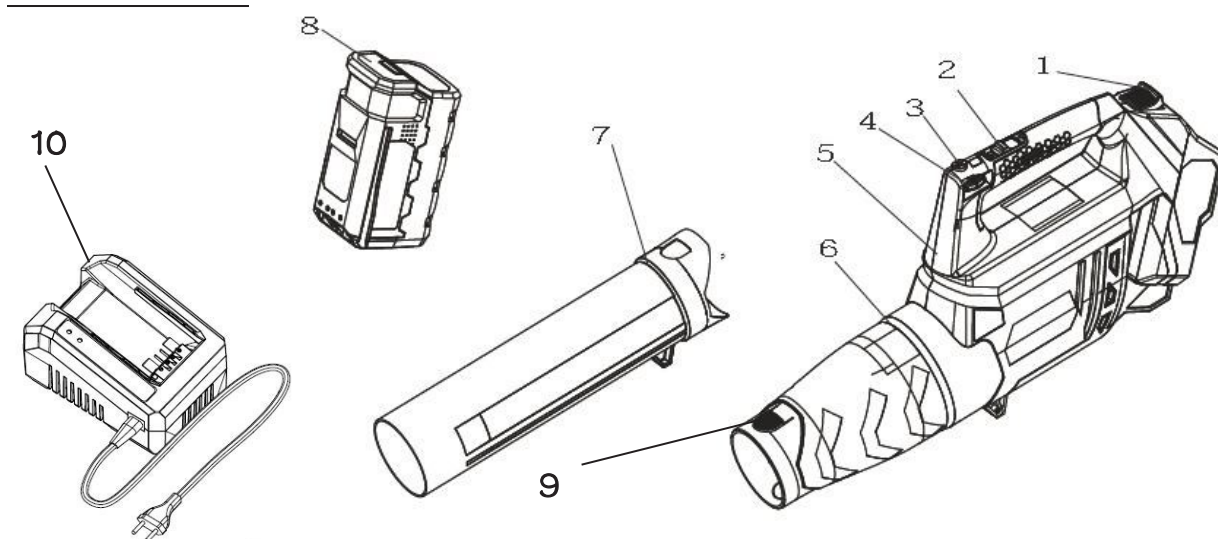
⚠ **CAUTION:** Use only the following type and size battery(ies):
BL85820, BL85840.

FEATURES

PRODUCT SPECIFICATIONS

LB20058

Input.....58Volt, DC only
 Speed.....105 MPH/ 480 CFM
 Tube Length..... 23 In.
 Weight..... w/o battery 6.0 LBS
 w/ 2Ah battery 9.8 LBS, 4Ah battery 11.4 LBS



No.	Description	No.	Description
1	Battery Release Button	6	Rear Tube
2	Power Trigger	7	Front Tube
3	Turbo Button	8	Battery Pack
4	Speed Control Wheel	9	Tube Latch
5	Main Housing	10	Charger

ASSEMBLY

PACKING LIST

- Blower with rear tube assembled
- Front Blower Tube
- Battery and Charger
- Instruction manual

This product requires some assembly.

Carefully remove the product and any accessories from the box. Make sure that all items listed in the packing list are included.

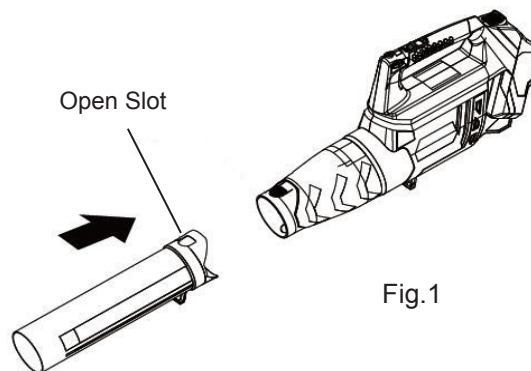
Inspect the product carefully to make sure no breakage or damage occurred during shipping.

Do not discard the packing material until you have carefully inspected and satisfactorily operated the product.

If any parts are damaged or missing ,please call 1.800.313.5111 for assistance.

TUBE ASSEMBLY

To attach the front tube to the rear blower tube, align tubes so that the open slot in the front tube is in line with the tube latch on the rear tube. Press firmly together until the slot locks in place over the tube latch. Make sure connection is secure. (Fig. 1)



OPERATING

TO TURN THE TOOL ON

Slide on/off switch forward to "ON" position. To turn the tool OFF, slide backward to "OFF" position.

WARNING: Do Not use the blower with any type of accessory or attachment. Such usage might be hazardous.

AIR SPEED CONTROLS

Rotate the speed control Wheel to accelerate or decelerate air speed. By pressing turbo button, air speed will immediately accelerate to maximum level. (See fig. 2)

BLOWING

Blower can be used to clean corners, fences, walls, wooden areas or beneath cars. Be careful how you point the jet of air as it could move heavy material and cause injury or damage.

Turn the switch to on, point the jet of air in front of you and move forward slowly to gather together the leaves or to move the leaves from inaccessible areas.

WARNING: After battery has been fully depleted, make sure switch is in the "OFF" position.

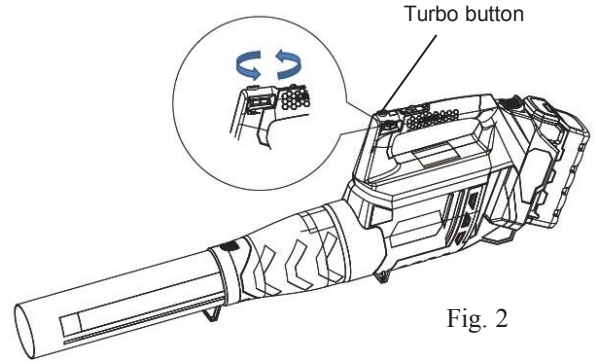
Avoid collisions with hard objects which could damage your blower.

Keep bystanders and animals at least 15 feet (5 m) away from the working area.

Make sure that the switch is in "OFF" position, the battery pack is disconnected and all the rotating parts are at a standstill before cleaning, carrying out inspections or moving from one place to another.

Do not put part of your body such as hands and fingers in the exhaust opening.

Do not switch the machine on in enclosed or poorly ventilated spaces or in the presence of flammable and/or explosive substances such as liquids, gas and powders.



MAINTENANCE

If you drop the blower, carefully inspect it for damage. If the tube is broken, housing cracked, or handles broken or if you see any other condition that may affect the blower's operation, call our customer service help line at 1-800-313-5111 for assistance.

To clean the tool, make sure the battery is detached from the unit, then use only mild soap and a damp cloth. Never let any liquid get inside the tool; never immerse any part of the tool into a liquid.

IMPORTANT: To assure product SAFETY and RELIABILITY, repairs, maintenance and adjustment should be performed by an authorized service center or other qualified service organization, always using identical replacement parts.

CAUTION: Do not at any time let brake fluids, gasoline, petroleum based products, penetrating oils, etc., come in contact with plastic parts. They contain chemicals that can damage, weaken or destroy plastic.

Fertilizers and other garden chemicals contain agents which greatly accelerate the corrosion of metals. Do not store the tool on or adjacent to fertilizers or chemicals.

STORING THE BLOWER

Clean the blower thoroughly before storing. Store the blower in a dry, well-ventilated place that is inaccessible to children. Keep away from corrosive agents such as garden chemicals and de-icing salts.

■ Store and charge your batteries in a cool area. Temperatures above or below normal room temperature will shorten battery pack life.

■ Never store batteries in a discharged condition. Wait for battery pack to cool and fully charge immediately.

■ All batteries gradually lose their charge. The higher the temperature, the quicker they lose their charge. If you store your unit for long periods of time without using it, recharge the batteries every month or two. This practice will prolong battery pack life.

■ Recharge batteries every 3 months.

When not in use, your Cordless Blower should be stored indoors in a dry and high or locked-up place, out of reach of children.

TROUBLESHOOTING

Problem	Possible Cause	Possible Solution
- Unit does not run	- Battery not making contact - Battery not installed properly - Battery not charged	- Check battery is fully inserted - Check that battery is securely connected to the blower - Check battery charging requirements
- Battery will not charge	- Battery not inserted into charger - Charger not plugged in - Surrounding air temperature too hot or too cold	- Insert battery into charger until LED appears - Plug charger into a working outlet - Check current at receptacle by plugging in a lamp or other appliance - Check to see if receptacle is connected to a light switch which turns power off when you turn out the lights - Move charger and tool to a surrounding air temperature of above 32 degree F (0 degree C) or below 100 degree F (+37.8 degree C)

CHARGING THE BATTERY PACK

Charge the battery pack only with the charger provided.

Allow at least 75 minutes of charge time for 2Ah battery or 120 minutes of charge time for 4Ah battery before initial use of the blower.

Make sure the power supply is normal household voltage, 120volts, 60Hz, AC only.

The battery charger should be operated in temperatures between 32 and 100 degrees F

The battery should be charged in a cool, dry place.

2 to 3 initial charging/discharging cycles may be required to achieve maximum run time/capacity.

DO NOT attempt to open the charger or the battery. There are no customer serviceable parts inside. Call customer service helpline at 1-800-313-5111 for assistance.

DO NOT incinerate battery packs even if they are severely damaged or completely worn out. They can explode in a fire causing injury.

DO NOT charge appliance in rain, or in wet locations.

Use the battery charger indoors only.

Disconnect charger from the power supply when not in use to prevent damage to the charger during a power surge.

When fully charged, the battery can be safely stored in temperatures down to - 4 degrees F for a period of up to four weeks, before requiring charging. Fully charge battery pack every 90 days.

If over a period of time the battery pack quickly runs down after a 75min or 120min full charging period, a replacement battery pack is needed.

To prevent permanent damage to the battery, never store in a discharged condition.

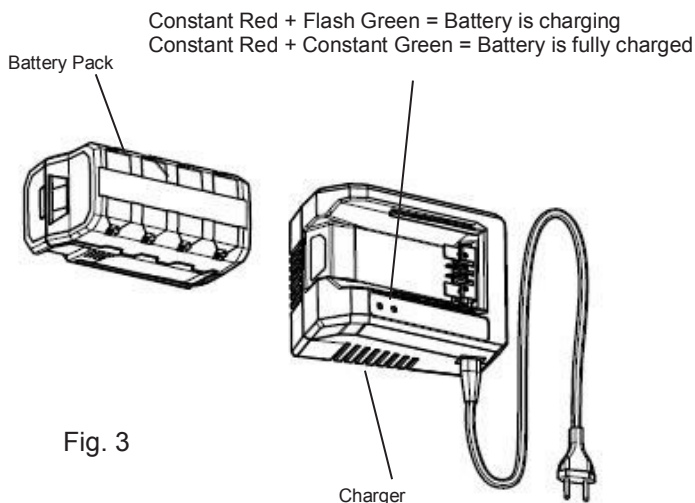
WINTER STORAGE - Fully recharge before storage and then again every 90 days.

Since the battery will not develop a memory, it does not have to be fully discharged before recharging.

A small leakage of liquid from the battery cells may occur under extreme usage, charging or temperature conditions. This does not indicate a failure. However, if the outer seal is broken and this leakage gets on your skin.

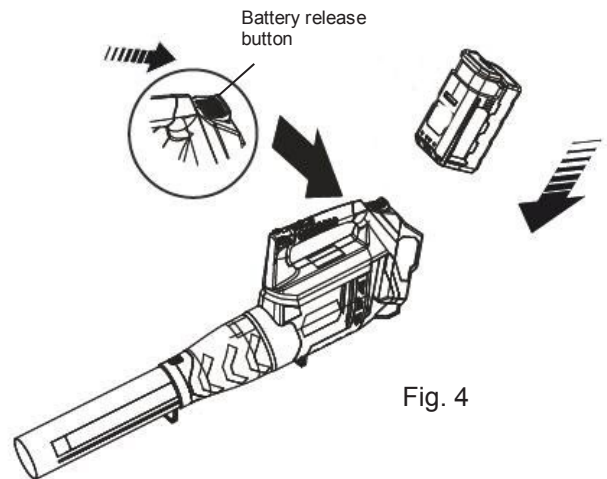
- Wash quickly with soap and water.
- Neutralize with a mild acid such as lemon juice or vinegar.
- If the battery liquid gets in your eyes, flush them with clean water for a minimum of 10 minutes and seek immediate medical attention.

TO CHARGE - SEE CHARGER MANUAL FOR COMPLETE INSTRUCTIONS



INSTALLING AND REMOVING BATTERY PACK FROM THE UNIT

Slide the battery pack in your blower (see Fig. 4). Ensure the battery is securely connected to blower. To remove battery, depress release button and slide battery pack out of tool.



BATTERY DISPOSAL

Remove the battery pack from the Cordless Blower, cover the terminals with heavy duty adhesive tape. Do not attempt to destroy or disassemble battery pack or remove any components. This product contains lithium-ion batteries which must be recycled or disposed of properly. Local, state or federal laws may prohibit disposal of these batteries in the municipal solid waste or rural trash pick up systems.



The RBRC seal on the Li-Ion battery pack indicates that the cost to recycle the battery pack at the end of its useful life has already been paid by The Great States Corporation/American Lawn Mower Company. It is illegal to place spent Li-Ion batteries in the local municipal solid waste or in the trash. RBRC in cooperation with The Great States Corporation/American Lawn Mower Company has provided an environmentally friendly and easy way to recycle spent Li-Ion batteries. Just contact your local recycling center or call 1.800.8.BATTERY for information on where to drop off the spent battery.



OPERATOR'S MANUAL

CORDLESS 58 VOLT LITHIUM BLOWER

WARRANTY POLICY

Five (5) year limited warranty on Earthwise 58 volt outdoor power equipment and two (2) year limited warranty on Earthwise 58 volt battery packs and chargers.

Earthwise warrants to the original owner that each new product and service part is free from defects in materials and workmanship and agrees to repair or replace any defective product or part for the warranty period as stated above from the original date of purchase except for the conditions and circumstances listed below:

This warranty applies only to the original purchaser at retail and may not be transferred.

Warranty applies if the product is used for personal, household or family use. Warranty is void if product is used for commercial, industrial or rental purposes.

Warranty does not include repairs necessary due to operator's abuse or negligence (including overloading the product beyond capacity or immersion in water), or the failure to assemble, operate, maintain or store the product according to the instructions in the operator's manual.

This warranty is not transferable and only applies to product sold directly from an authorized retailer. This warranty does not apply to any product, new or used, purchased through unauthorized third-party channels.

ANY INCIDENTAL, INDIRECT OR CONSEQUENTIAL LOSS, DAMAGE, OR EXPENSE THAT MAY RESULT FROM ANY DEFECT, FAILURE OR MALFUNCTION OF THE PRODUCT IS NOT COVERED BY THE WARRANTY. Some states do not allow the exclusion or limitation on how long an implied warranty lasts, so the above limitation may not apply to you.

Proof of purchase, original dated sales receipt, must accompany all warranty claims.

Products sold damaged or incomplete, sold "as is", or sold as reconditioned are not covered under the warranty.

Damage or liability caused by shipping, improper handling, improper assembly, incorrect voltage, improper wiring, improper maintenance, improper modification or the use of accessories and/or attachments not specifically recommended is not covered by this warranty.

Expendable items that become worn during normal use are not covered by the warranty.

Warranty does not cover damage caused by cold, heat, rain, excessive humidity, corrosive environments and materials, or other contaminants. Warranty does not include installation, assembly or normal adjustments explained in the operator's manual.

The expense of delivering the product to the vendor and the expense of returning the product or replacement parts to the owner is not covered by the warranty.

The warranty does not cover normal deterioration of the exterior finish, including but not limited to scratches, dents, paint chips or any corrosion or discoloration caused by heat, abrasive and chemical cleaners.



American Lawn Mower Company
The Great States Corporation
7444 Shadeland Station Way
Indianapolis, IN 46256 USA
Phone 1-800-313-5111
www.earthwisetools.com

In a continued commitment to improve quality, the Manufacturer reserves the right to make component changes or design changes when necessary.