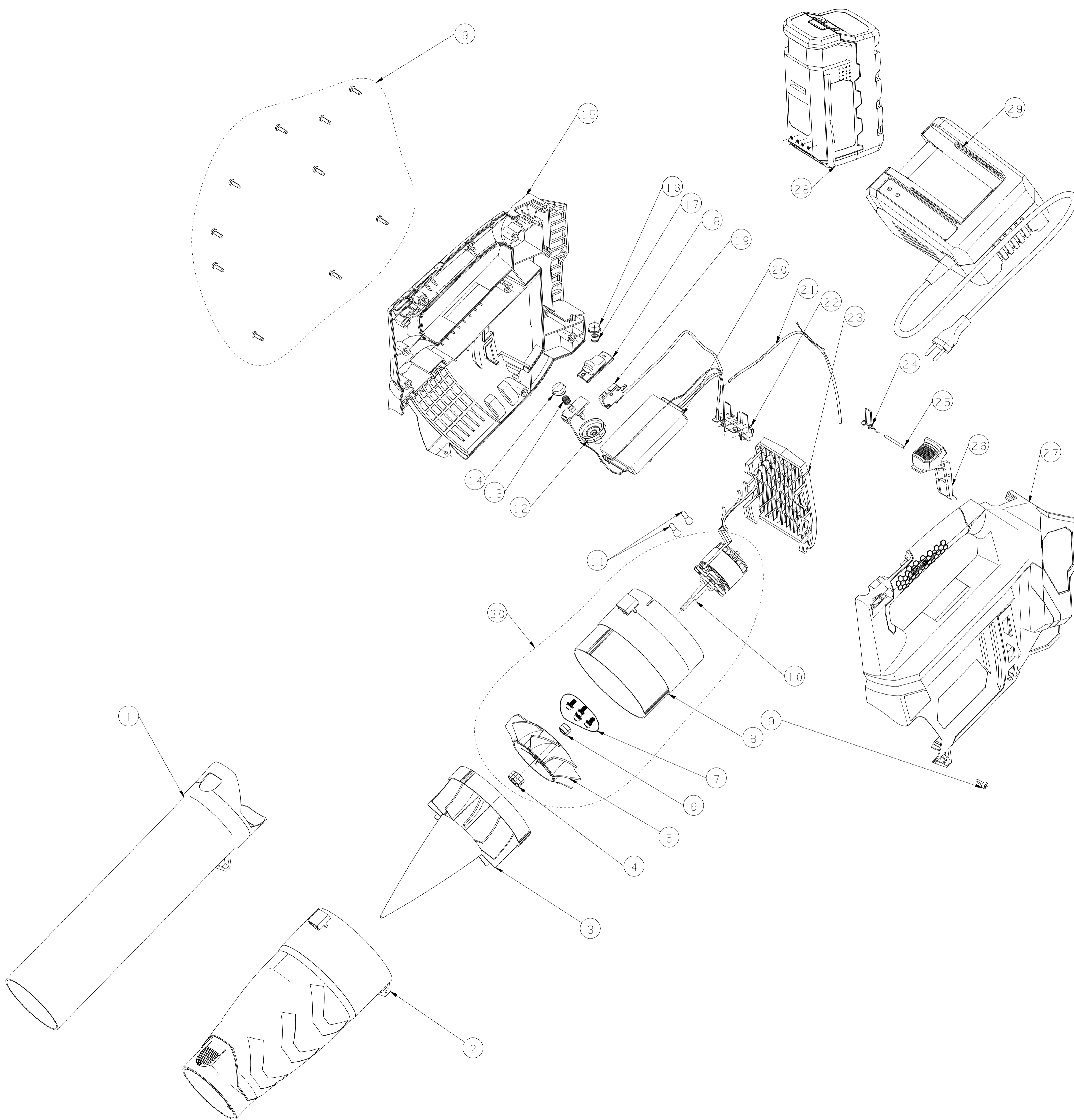


版本号	描述	审核人	日期



30	110108013	MOTOR AND FAN ASSEMBLY	1
29	190001014	56V DC Charger 2.0AH	1
28	130003013	56V_DC P/P ASS'Y LI-ION 4.0AH	1
27	410104013	PLASTIC,LEFT HOUSING	1
26	410129013	PLASTIC, BATTERY RELEASE BUTTON	1
25	320050001	SHAFT,DIA 3.0*41	1
24	230004001	SRPTIN FOR BATTERY LOCK LEVEL	1
23	410105001	PLASTIC,IN COVER	1
22	410026001	PLASTIC,BATTERY TERMINAL HOLDER	1
21	630014001	ELECTRIC /3266 14AWG/ RED 275MM	275 mm
20	110107001	CONTROL PCBA	1
19	620004001	MICRO-SWITCH\2PIN\56V DC& 20A MSF-1220	1
18	410112013	PLASTIC, TRIGGER	1
17	230005001	SPRING FOR BATTERY RELEASE CAP	1
16	410017013	PLASTIC, BATTERY RELEASE CAP	1
15	410109013	PLASTIC,RIGHT HOUSING	1
14	410114013	PLASTIC, ADDED SPEED BUTTON	1
13	230015001	SPRING FOR ADDED SPEED BUTTON	1
12	410113013	PLASTIC, ADJUST SPEED BUTTON	1
11	640002001	CLOSED TERMINAL	2
10	660010001	MOTOR\56V DC BLOWER	1
9	220001001	SCREW,ST 4.0X16	11
8	410106013	PLASTIC,MOTOR INSTALL PLATE	1
7	220117001	SCREW,M5 CROSS HEAD	4
6	320107001	MACHINING,BUSHING	1
5	410108002	PLASTIC, FAN	1
4	220104001	NUT,M8 X 1.0 -L	1
3	410110002	PLASTIC, AIR GUIDE	1
2	410111013	PLASTIC, FIRST TUBE	1
1	410310001	PLASTIC, SECOND TUBE ,MORE BIG	1
ITEM	PART NUMBER	DESCRIPTION	QTY

投影 PROJECTION		规格 SPEC	编号 P/N	090005013
设计 DR.	吕永滔	名称 NAME	重量	比例
校对 CK.		备注 REMARK	共页TOTAL P.	第页PAGE
审核 APPR.			浙江卓远机电科技有限公司	